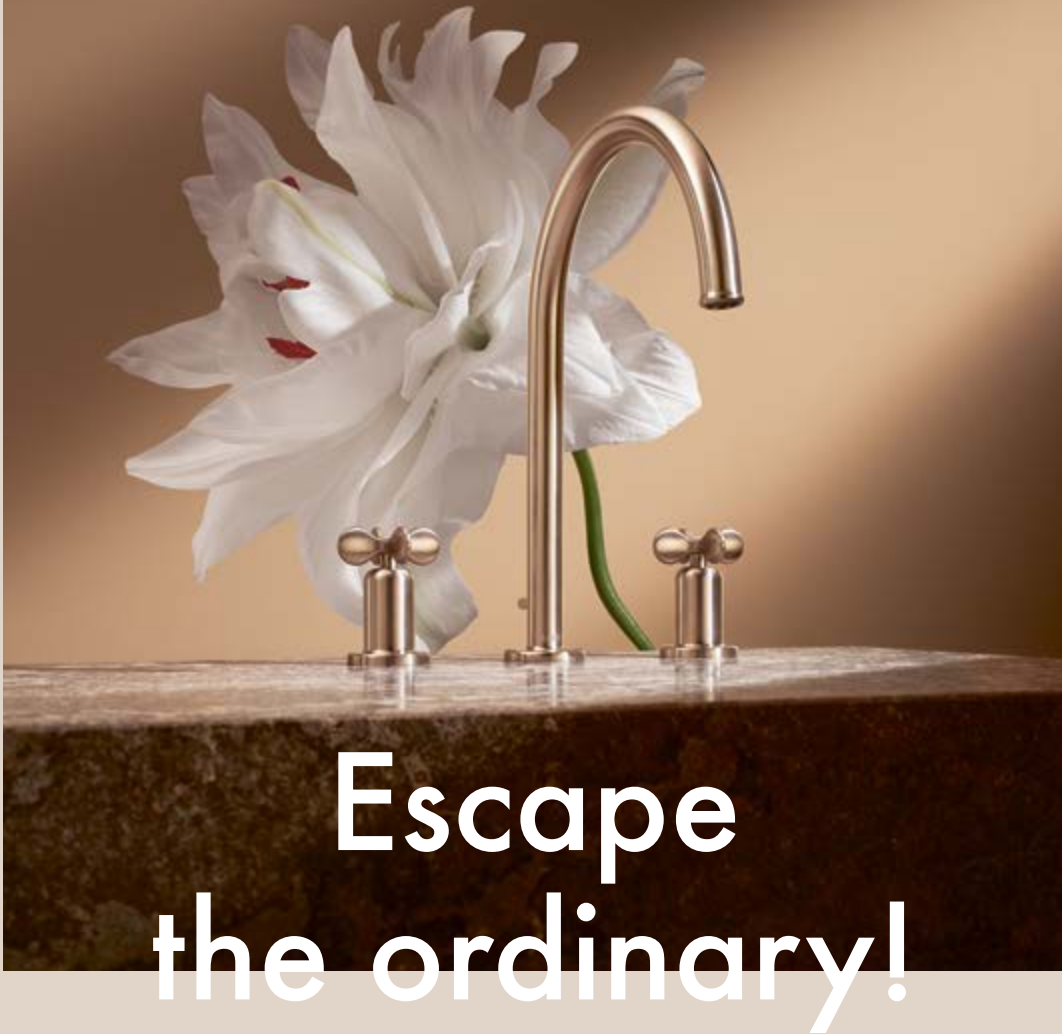


AXOR

Water Stories



Escape
the ordinary!

Distinctive bathroom collections | Luxurious water experiences

Exceptional stylistic freedom realized in collaboration with world-renowned designers.

MAGAZINE

AXOR

Escape
the
ordinary!

AXOR

06	AXOR Brand
08	AXOR Designers
10	Why AXOR
12	AXOR FinishPlus
16	AXOR Signature

Collections

22	Barber Osgerby
24	AXOR Archivio AXOR Novelty
30	AXOR One
34	Antonio Citterio
36	AXOR Citterio C
40	AXOR Citterio
44	AXOR Citterio E
48	Philippe Starck
50	AXOR Starck
54	AXOR Starck V
56	AXOR Starck Organic
60	Patricia Urquiola
62	AXOR Urquiola
64	Jean-Marie Massaud
66	AXOR Edge
70	AXOR Massaud
72	PHOENIX
74	AXOR MyEdition
78	AXOR Uno
82	AXOR Montreux

Programs

88	AXOR Showers
90	AXOR ShowerSphere
92	AXOR LampShower
94	AXOR ShowerHeaven
96	AXOR Conscious Showers
98	AXOR Shower Systems
100	AXOR Incava AXOR Novelty
104	AXOR Starck Shower Column
106	AXOR Starck Nature Shower Column
108	AXOR ShowerComposition
110	AXOR One Showerpipe
112	AXOR Showerpipe 800
114	AXOR Montreux Showerpipe
116	AXOR Showerpipe by Front
118	AXOR Shower Controls
124	AXOR Drain
128	AXOR Accessoires
130	AXOR Universal Circular
130	AXOR Universal Softsquare
130	AXOR Universal Rectangular
130	AXOR Montreux
132	AXOR Basins and Bathtub
134	AXOR Suite
136	AXOR FlushPlate
137	AXOR Bidette Showers
138	AXOR Kitchen
142	Contact
143	Imprint

AXOR Novelties

PAGE 24

AXOR Archivio

AXOR Archivio designed by Barber Osgerby distills decades of design into a refined, contemporary language. Available in a wide array of product variants and installation types, this comprehensive collection offers remarkable versatility, flexibility and freedom of choice.



PAGE 100

AXOR Incava

AXOR Incava designed by Antonio Citterio redefines the shower space as an architectural statement of seamless integration. Every function is designed for intuitive interaction and visual clarity, transforming the bathroom into a serene, immersive environment of precision, purity, and ease.



Since 1993, AXOR has led the way in transforming the bathroom into a place of personal luxury, giving you stylistic freedom, luxurious water experiences and excellence in every detail. Collaborating with world-leading designers, renowned for bold visions and distinctive styles, AXOR offers a product portfolio unrivaled in its variety. Every faucet, shower, basin, tub and accessory has a character of its own, enabling you to bring your personal taste and style to every corner of the bathroom.

Uncompromising when it comes to quality and innovation, AXOR engineers and manufactures more than 90 percent of its products in Germany's Black Forest, ensuring designs that are exceptionally long-lasting thanks not just to their refined aesthetics but to their manufacturing excellence and technological superiority. All products are available in the exclusive AXOR FinishPlus range of surfaces, allowing even greater stylistic freedom. And for the ultimate in free expression, AXOR Signature can transform almost any AXOR piece into a one-of-a-kind creation.

When AXOR first debuted the AXOR Starck collection by Philippe Starck with the Salon d'Eau in 1994, it introduced a simple yet groundbreaking concept to the world of bathroom design: work in close collaboration with the world's leading minds to create cohesive collections that are unique, personal expressions of style.

In the three decades that have passed since then, the AXOR Starck collection has become an enduring icon in bathroom design, inspiring countless users and architects alike with its timeless, masterful minimalism. And AXOR, asserting itself as a pioneer of personal luxury in the bathroom, has continued to stay true to this unique model of success, striking up exclusive collaborations with a careful selection of world-renowned designers.

From the signature Italian elegance of Antonio Citterio to the unorthodox geometries of Patricia Urquiola, each designer brings their own unique style and personality to the table. Conveyed with the German manufacturing excellence of AXOR, these designer's ideas become distinct collections that push the boundaries of bathroom design. As diverse as the personalities behind them, these collections offer a vast stylistic variety that sets AXOR apart and enables customers to express individuality—and pursue their own, personal ideas of luxury.



Antonio Citterio



Barber Osgerby



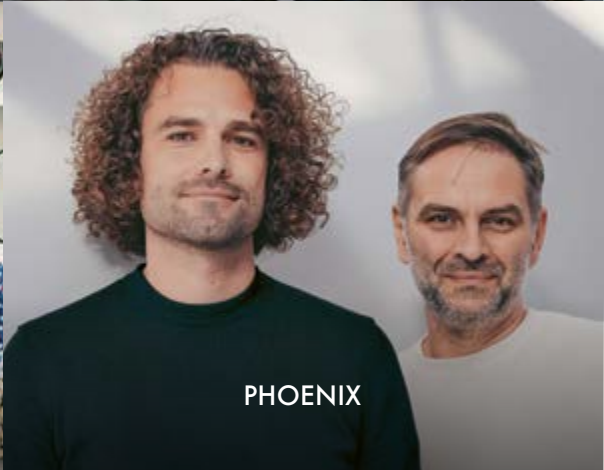
Philippe Starck



Jean-Marie Massaud



Patricia Urquiola



PHOENIX



Nendo



Front

FIVE REASONS FOR AXOR



1. Design diversity

AXOR collaborates with internationally renowned designers. Innovative and timeless at once, their design approaches set standards again and again. With their highly distinct signatures, they shape the great stylistic diversity and product depth of the AXOR range, providing new inspiration for the development of the space, its use, and users to express their personality.

2. Individualization

The exclusive AXOR FinishPlus and AXOR Signature customization services meet customers' increasing demand for more options to customize bathroom products. With colored PVD surfaces and customized, bespoke solutions, AXOR products become unmistakably unique.



The Conrad, Los Angeles (USA)

3. Outstanding quality, timeless by design

Ninety percent of our portfolio is assembled at the AXOR Centre for Excellence in Germany's Black Forest. Here, AXOR products are created with a focus on excellent quality and craftsmanship throughout their production. As part of our promise of long-lasting quality, AXOR offers an extended five-year warranty¹ and a spare part availability on all products.

¹ axor-design.com/tr/product-guarantee

4. Sustainability

Developed exclusively in Europe in accordance with science-based targets, our products are designed to be timeless and built to last. AXOR is pursuing the goal of converting all products to water-saving technologies², by 2030 and seeks to promote sensible consumption of our most precious resource: water.

² Our water-saving technologies, EcoSmart and CoolStart, enable more precise and efficient operation with lower water and energy consumption.

The water-volume-control that is used with EcoSmart technology ensures that no single drop is wasted. With this technology the faucet produces an air-infused jet without constraining the ritual of washing or showering. Depending on the product, the flow rate for AXOR faucets is between 4l/min (EcoSmart+) and 5l/min (EcoSmart), for AXOR kitchen faucets 6l/min (EcoSmart) and for AXOR showers between 6l/min (EcoSmart+) and 8l/min (EcoSmart).

The CoolStart principle is as simple as it is ingenious: Warm or hot water only flows when you really need it. You only call up the necessary energy when you actively move the handle to the left.

5. Worldwide presence

As part of the Hansgrohe Group, AXOR has 35 subsidiaries and 22 sales offices worldwide and supplies its products to over 145 countries. AXOR faucets, showers, and kitchen faucets can be found in the world's finest homes, hotels, and restaurants. International architects, planners, and builders trust AXOR quality in products and expert advice.

CHOOSE YOUR COLOR

AXOR FinishPlus

ELECTROPLATED
FINISHES



Chrome
-000

PVD SURFACES



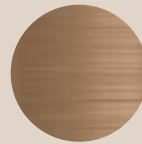
Brushed Brass
-950



Polished Gold Optic
-990



Brushed Gold Optic
-250



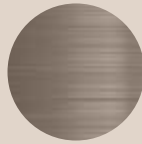
Brushed Bronze
-140



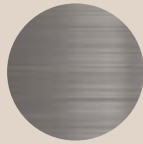
Polished Red Gold
-300



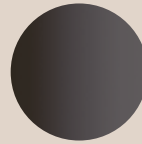
Brushed Red Gold
-310



Brushed Nickel
-820



Stainless Steel Optic
-800



Polished Black Chrome
-330



Brushed Black Chrome
-340

LACQUERED
SURFACES



Matt Black
-670



Matt White
-700

Robust, distinctive and personal: AXOR FinishPlus surfaces unlock a plethora of new possibilities to bring personal expression to your bathroom. Through a combination of meticulous craftsmanship and cutting-edge technologies, each finish is made to the highest standards of quality, color-fastness and scratch-resistance.

Whether you want to accentuate the design of a product or blend it seamlessly into the palette of your bathroom: AXOR FinishPlus offers a vast variety of colors and finish types to tailor any AXOR product to your personal taste. With most popular surfaces constantly in stock and the remaining finish types custom-made and shipped within six weeks, AXOR FinishPlus offers not only the best in personalization, but also the ultimate in convenience.





The masterful combination of high-tech and craftsmanship

AXOR sets the standard for personalization through three different high-quality finishing technologies.

Electroplating



Timeless in appearance and exceptional in quality, Chrome is the standard surface for all AXOR products. Created by electroplating, a complex chemical process, Chrome is a durable, classic choice for a stand-alone finish or as a base for PVD and lacquer coating.

PVD



The radiant metallic luster and characteristic quality of brushed and polished PVD surfaces is the result of a cutting-edge physical vapor deposition process, developed and carried out in the in-house vacuum chambers of AXOR.

Lacquer



AXOR FinishPlus lacquered surfaces offer a bold look that gives any product a silky, smooth feel and simple elegance. Each finish comprises one or two layers of paint applied on to a chrome-plated surface, resulting in strong, intensely colorful finishes able to withstand daily wear and tear in the bathroom.



W
WALDORF ASTORIA
BERLIN

Cifera

MAKE IT YOURS

AXOR Signature

AXOR Signature is the pinnacle of a mission we've pursued since 1993: to bring individual visions of luxury to life. Offering limitless customization starting from just one unit—from bespoke finishes and engravings to product adaptations and one-of-a-kind creations—our master artisans in Schiltach, Germany transform your ideas into lasting expressions of your personality and style. With AXOR Signature, the extraordinary begins with you.



Add your signature

Give your bathroom an extra layer of personality with communicative symbols, personal emblems and customized engravings. Laser your own initials or a unique symbol onto the surface of any AXOR product for a refined personal finish, or create detailed, haptic engravings for a motif of your choosing with the help of precise laser-milling technology.



Expressive Finishes

Embrace color without boundaries. An extensive variety of customizable finishing options empowers you to bring your bathroom's personality to the next level. For those who can't decide on one color: Just pick two. From subtle tonal shifts to bold contrasts—the possibilities of finishing products in your own bi-color configurations are near endless. In addition, AXOR Signature enables you to custom-finish AXOR products in any color on the RAL spectrum.



Design you can feel

Choose from a curated range of distinct surface structures to add a unique personal touch to your bathroom—or, create your own with 3D engraved structures or two-dimensional lasered patterns.



Mix and Match



AXOR Signature enables you to create custom products by mixing components from different AXOR collections—resulting in solutions that are new, inspiring interpretations of world renowned designers' creations.



Signature statements

Your personal vision comes to life with AXOR Signature. Our in-house experts are well-suited and eager to help realize any custom, project-specific designs you can imagine, starting from just one unit. Just share your idea, and we'll take care of the rest. From gemstone inlays and custom crystal handles to marble finishes and wood inserts—a wide variety of materials is possible.



Make it fit

Each bathroom plan comes with its own unique set of demands. AXOR Signature provides customers the freedom to create products with adaptations in dimensions, flow rate and more as they wish, all while maintaining the functionality, operation and aesthetic of a product's design.

AXOR Collections

Barber Osgerby



Internationally celebrated designers Edward Barber and Jay Osgerby founded their studio in London in 1996 after graduating from the Royal College of Art. Their multidisciplinary approach explores the boundaries between industrial design, architecture, and art. In addition to designing furniture and lighting for leading global brands, Barber Osgerby has developed projects ranging from the 2012 Olympic Torch to the UK's two-pound coin for the Royal Mint, and bespoke seating for Portsmouth Cathedral.



AXOR Archivio



AXOR One



A Timeless Archive, Reimagined

AXOR Archivio



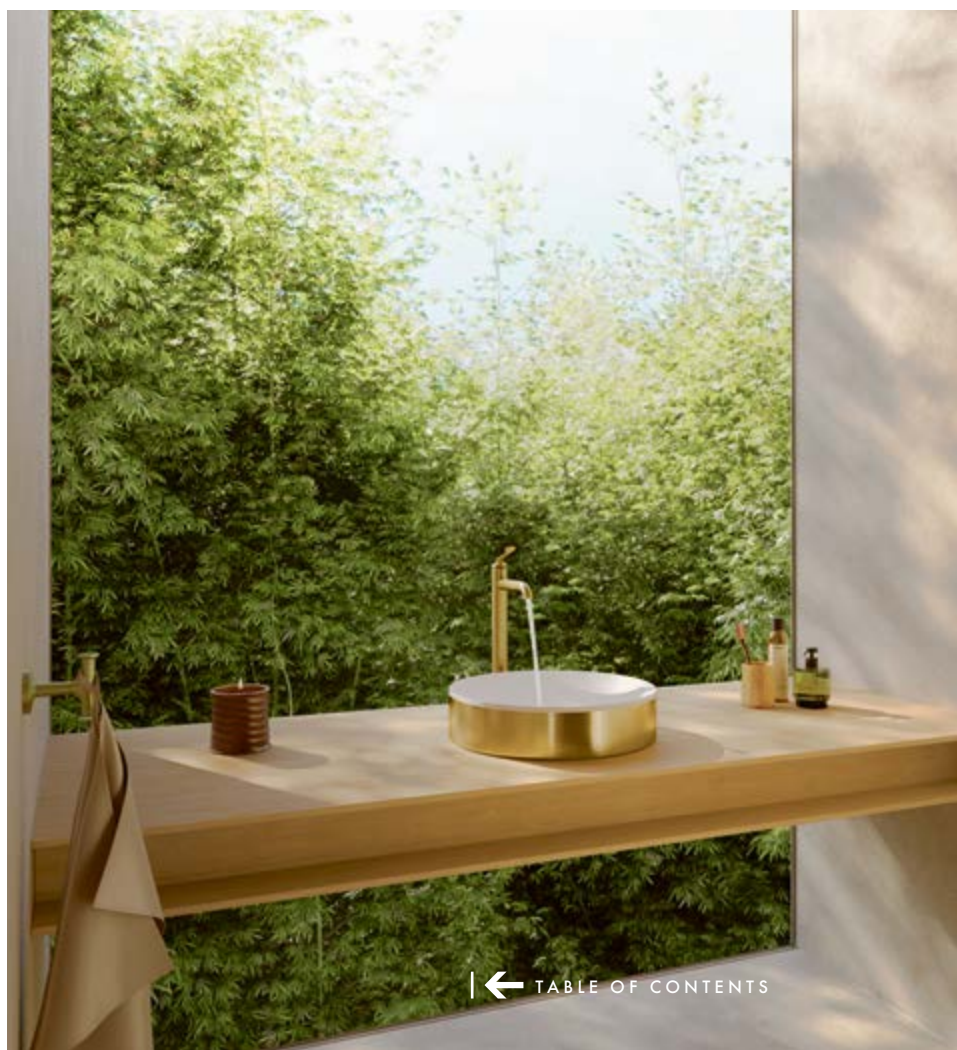
“We set out to create a new icon for AXOR—an object that’s instantly recognizable and lasting. The collection looks to the past while presenting it through a refined, contemporary lens, achieving a seamless balance between past and future.”

AXOR Novelty

EDWARD BARBER & JAY OSGERBY



Drawing inspiration from historic forms, archival silhouettes, and classical detailing, the AXOR Archivio collection celebrates timeless design. It brings together soft, flowing shapes with enduring proportions and refined decorative touches. The result is a transitional design that feels at home in any interior, from any era. Whether fitted with distinctive cross handles or smooth, rising levers, each piece invites the touch and offers a sense of calm precision in daily use.



Distinctive, bloom-like cross handles serve as the visual and tactile signature of AXOR Archivio, their central white inlays providing a subtle, modern twist on traditional hot and cold markings, in keeping with transitional design style.

Bell-shaped bases, smoothly contoured spouts with refined detailing at the lip, and escutcheons with soft radii express a strong harmony of softness and structure.





Timeless by design, AXOR Archivio strikes an elegant balance between traditional charm and modern sophistication, creating a quiet yet unmistakable presence—a new familiar—across wash basin, bath and shower.



Private Residence, Augsburg (Germany)

“AXOR One provokes the memory of water
but heralds a new way of controlling it
that is much more precise and incredibly refined.”

EDWARD BARBER & JAY OSGERBY

The essence of simplicity

AXOR One



Private Residence, Augsburg (Germany)

A bathroom collection so elegant, elemental and pure it could be realized only through special innovation. Using Select Technology and a new mode of interaction, AXOR One reinvents familiar archetypes for greater clarity, enhanced function and superior control. Timeless by design and available in a wide range of forms and applications, the collection brings exquisite beauty to any bathroom.



As alternatives to the collection's trademark lever and Select handle, the expansion introduces a new cross handle typology that, according to the designers, "traverses the space between traditional and modern".



Antonio Citterio



Antonio Citterio has impacted Italian design in a way that few others have. After graduating from Politecnico di Milano in 1972, Citterio spent a decade working primarily in the field of industrial design. From 1987 to 1996, he collaborated with Terry Dwan, designing buildings in Europe and Japan. In 2000, Citterio founded an interdisciplinary firm for architecture and interior design together with Patricia Viel, which is now named “ACPV ARCHITECTS Antonio Citterio Patricia Viel”, developing projects for luxury hotels, offices and residential complexes worldwide.

Throughout his career, Citterio has been awarded the prestigious Compasso d’Oro-ADI three times, while his designs have been shown at institutions such as the MoMA in NYC and the Georges Pompidou Center in Paris. Antonio Citterio is an architect, designer, and perfectionist. His signature stands for an effortless mix of classic shapes and high-end materials.



AXOR Citterio
Antonio Citterio with Toan Nguyen



AXOR Citterio E



AXOR Citterio C



In Park Lane, heritage and contemporary design come together in perfect balance. AXOR Citterio C, finished in Brushed Brass, elegantly expresses this philosophy.

Contemporary, sophisticated, slender

AXOR Citterio C

The sleek form of the minimalistic design is complemented by the faucet's resource-conserving CoolStart¹ function and a flow rate of just 5 l/min.



Slender, elegant and exceptionally refined, AXOR Citterio C reinterprets the washbasin faucet for a new era—one that demands ever more comfort and individuality from ever smaller bathroom spaces. Minimalist in spirit, with soft contours and a sensuous form, AXOR Citterio C invites the touch while delighting the eye from every angle. Distinctive yet understated, the collection is at home in any bathroom ambience.

¹ With CoolStart, warm or hot water only flows when you really need it by actively moving the handle to the left. A water-volume control ensures a flow rate of 5l/min without constraining the ritual of washing or showering.

“Slender, soft and sensuous, AXOR Citterio C meets our need for greater comfort, reduced materiality and a lasting, contemporary design that works in any bathroom setting.”

ANTONIO CITTERIO



For those who wish to make a more personal statement, the handles of AXOR Citterio C are available in the unique cubic cut pattern as standard and other predefined textured patterns via AXOR Signature.



A
contemporary
classic

AXOR Citterio



AXOR Citterio—an icon of modern bathroom design. Understated yet unmistakably luxurious, its distinctive flat surfaces brilliantly reflecting the light, this is a collection that celebrates the preciousness of water itself. With its balanced proportions and elegant geometries, AXOR Citterio is at home in any bathroom ambiance.





Design by Antonio Citterio with Toan Nguyen



A range of elegant solutions brings the neoclassical design language of AXOR Citterio into the bathroom.

“Whoever enjoys the ritual of daily washing should do so with beautiful objects.”

ANTONIO CITTERIO





“AXOR Citterio E is a redesign of an everyday object. These little yet refined details are extremely important for our perceptions.”

ANTONIO CITTERIO

The essence of elegance

AXOR Citterio E





Familiar yet new, contemporary yet classic, dynamic yet understated. AXOR Citterio E affirms the wisdom of the Pythagorean principle, that harmony is to be found in the calm balance of opposites. A sophisticated synthesis of modern and archetypal forms, hard angles and sensuous curves, technological innovation and time-proven techniques of manufacture, the collection is best characterized by the word from which it derives its name. AXOR Citterio E is elegance itself.

De Gulde Schoen Suite Hotel, Antwerp (Belgium)
 The tapering spout and classic cross handles preserve the traditional heritage and evoke a familiar shape. The modern pin handle and ergonomic lever handle add to this special comfort



Philippe Starck



Philippe Starck is one of the most well-known creators of our time. Subversive and poetic, unexpected and free-spirited, rebellious and political, Starck experiments with a mission and a vision: creation, whatever shape it takes, must make life better for the largest number of people possible. As a vision of a better world, his creations attest a responsibility for society and the environment and a love for humanity. Starck has been generating “aha” moments and setting international standards with his design since the 1970s. He began collaborating with AXOR on bathroom design more than 30 years ago.



AXOR Starck



AXOR Starck Organic



AXOR Starck V



“The idea was to make a design that was deeply, structurally respectful of water. It’s our life. Water is life. And there is a beauty in water.”

PHILIPPE STARCK

A revolution in bathroom design

AXOR Starck



Its archetypal form, inspired by the traditional well pump, tells a story of beauty in simplicity. By reducing the faucet to pure essence, just two pipes and a joystick control, it focuses our attention on water itself. The luxury of it. The pleasure of it. The necessity of it. A collection as relevant today as it was at its launch more than 30 years ago, AXOR Starck may truly be described as The Original.



Rosewood São Paulo (Brasil) by Philippe Starck

“Water is life”, says designer Philippe Starck. This conclusion lead him to embrace for AXOR Starck the most simple, archetypal forms, those of a pipe and a bucket.

Timeless by design, AXOR Starck evokes the primitive hand pump, humanity’s earliest means of drawing water. Encasing an ultra-slim cartridge to regulate the flow-rate, the iconic single-lever faucet consists of two cylinders—one a vertical base, the other a diagonal spout—crowned by a choice of pin or feather handle. Simple, rational, reduced to the essential, the mixers are adaptable to any bathroom décor.



The miracle of water

AXOR Starck V

AXOR Starck V captures the wonder of water in motion. With its special design, the glass faucet body sculpts water into a swirling vortex. As water comes pouring down the open spout, one has the sense of experiencing a small miracle.





“Nature loves economy. That's why the AXOR Starck Organic collection looks so reduced, yet is full of invention. It is revolutionary.”

PHILIPPE STARCK

Sense and Sensibility

AXOR Starck Organic

AXOR Starck Organic is a groundbreaking homage to the greatest minimalist of all: nature herself. The faucet mimics nature not just in its slender, flowing forms but in its economy of resources. Thanks to the water-volume control, the faucet produces an air-infused jet of water with a flow rate of just 3.5 liters per minute. A personal expression of taste, the collection is also a personal statement of commitment—to a more resource-conscious existence.



When turning on the AXOR Starck Organic faucet, the integrated water-volume control at the spout ensures no single drop is wasted, while the separate temperature control with pre-set function saves water, energy and that other most precious resource: time.

The striking, powerful AXOR Starck Organic design is also found in the extraordinary bath faucets.
The floor-standing bath filler with integrated hand shower complements the range for free-standing bathtubs.



Characterized by slender, sculpted, energetic shapes that reference natural forms while offering tactile, ergonomic function, AXOR Starck Organic mixers constitute a landmark breakthrough in faucet design.

Patricia Urquiola



A leading voice of contemporary design, Patricia Urquiola was born in Spain and completed her studies in 1989 at the Politecnico di Milano under Achille Castiglione. Her work often triggers emotions by reinterpreting familiar shapes and references. A recipient of numerous international awards and prizes, Urquiola has been named designer of the year by numerous publications and even designer of the decade. Her creations appear in various museums and collections, including the MoMA in New York, the Musée des Arts in Paris and the Triennale Museum in Milan.



AXOR Urquiola



BEYOND by Geisel, Munich (Germany)

Characterized by a fusion of styles and shown in Brushed Gold optic, AXOR Urquiola features soft curves, gentle asymmetries and carved-out handles reminiscent of '70s industrial design.

AXOR Urquiola artfully combines shapes that recall different eras and styles of design. With its unconventional asymmetries, expressive flourishes and surprising mix of flat and rounded surfaces, the collection is equally at home in minimalist settings, where its striking originality is the focus, and in eclectic settings, where it naturally blends with the mixed décor.



Distinctive carved-out handles characterize the design of AXOR Urquiola.

“The bathroom comes alive through little memories and personal items that make a room a home. There are things which are vintage, elements which are contemporary design, but I think when you see all of it, there is a mix of new and some nostalgic pieces. Everything lives together. It’s not a bathroom, it’s part of my intimacy. The mixer has to be personal, just as with AXOR Urquiola.”

PATRICIA URQUIOLA

AXOR Urquiola complements a wide range of designs and styles.

Il Sereno, Lake Como (Italy)

A combination of AXOR Starck baton hand shower and AXOR Urquiola thermostatic mixer, finished in Brushed Red Gold, infuses this bathroom with clarity and warmth.



Jean-Marie Massaud



Since graduating from Paris' ENSCI-Les Ateliers in 1990, Jean-Marie Massaud has worked on projects in a vast range of scales and contexts. From a volcano-inspired football stadium in Mexico to a 'Manned Cloud' airship concept for ONERA to award-winning objects for everyday use, his work seeks to renew its subject through a thoughtful reconsideration of the stakes involved and an instinctive quest for elegance and lightness.

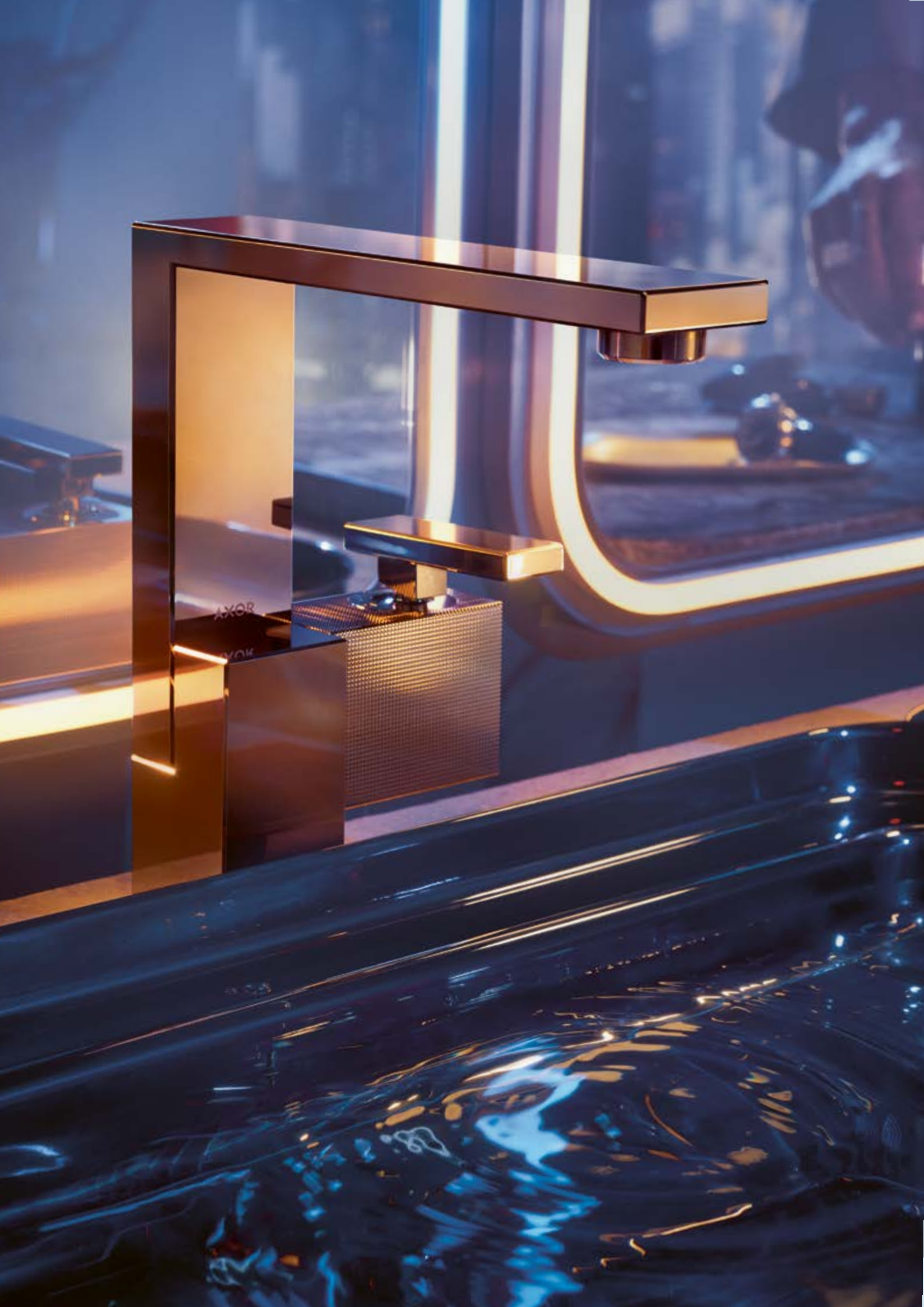
Massaud's unmistakable style provides refreshing stimulation—from product design to architecture. His creations are meant to touch people and provide a better place to live.



AXOR Edge



AXOR Massaud



A jewel in the bathroom

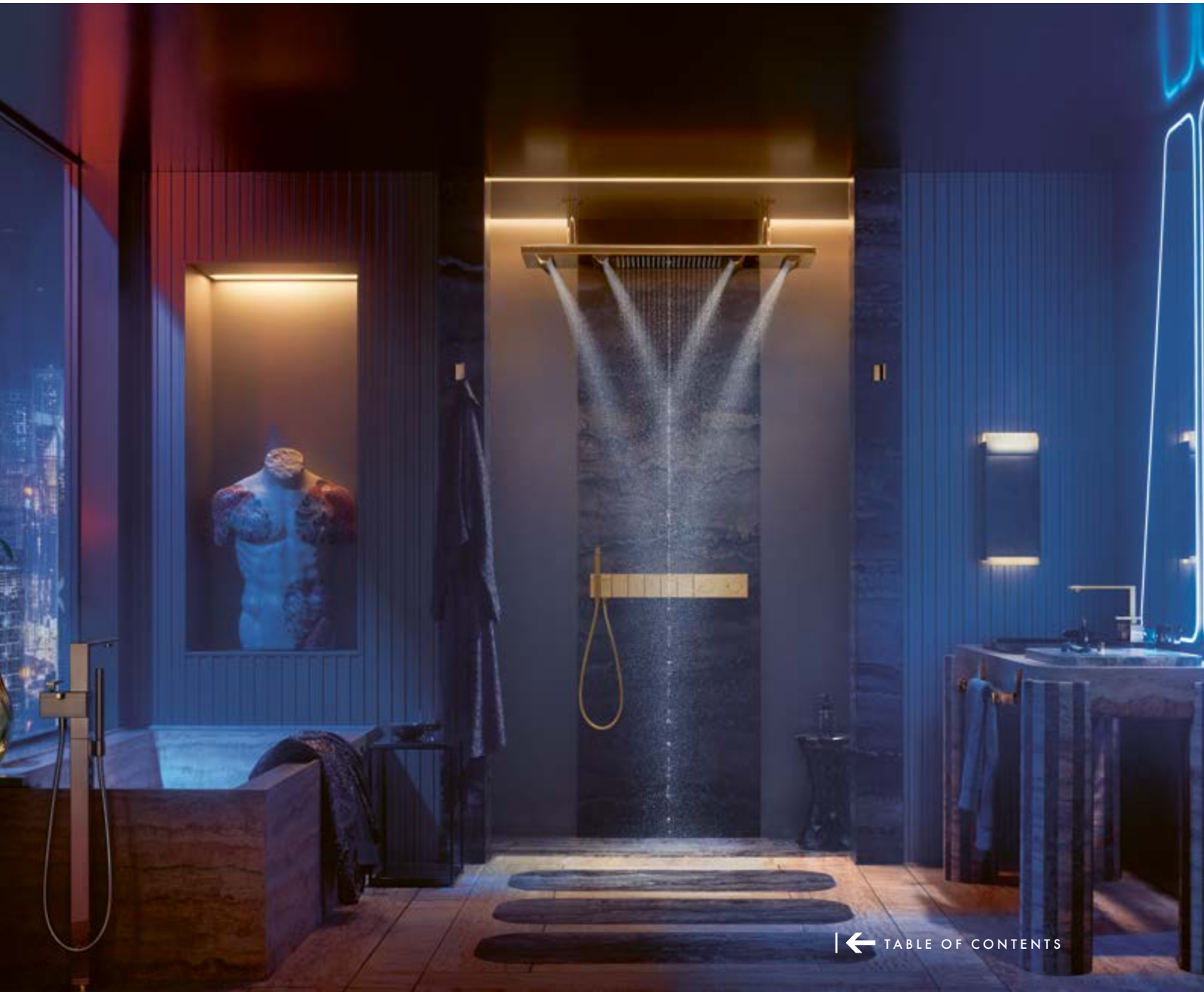
AXOR Edge



Inspired by the French tradition of arts décoratifs, AXOR Edge takes luxury in the bathroom to the next level. A sculptural composition of right-angled prisms, the faucet is ground and polished using a diamond-tipped tool from the aerospace industry. With surfaces of incomparable smoothness and textures milled with micron precision, AXOR Edge shines like a jewel in the world's most distinctive bathrooms.

“With AXOR Edge, we wanted to create an emotion by surprising people. When quality is a must, when competence is a due, then emotion must be first. More than a faucet, each product in the collection is a jewel, a sculpture—a real, functioning piece of art that shares your intimacy for life. That’s my understanding of luxury.”

JEAN-MARIE MASSAUD





In harmony with nature

AXOR Massaud

Eliminating all traces of traditional bathroom design, AXOR Massaud sets the stage for a holistic experience. The faucet, sensuously organic, resembles a blade of grass. The spout, exquisitely thin, becomes an elegant shelf. The spray, perfectly shaped, takes the form of a silky natural waterfall. The bathroom itself is transformed into a space of well-being, a spa-like retreat for mind and body.

PHOENIX



As an independent design studio, PHOENIX is one of the world's best addresses for product and interaction design. As designers, they feel a responsibility to reinvent the world we live in. They believe that focusing on the essentials of life and well-being—whether at home, at work, or on the go—is the greatest way to serve people. Creations from PHOENIX are tailored to the real needs and desires of people in their everyday lives—regardless of age, origin or lifestyle.

PHOENIX has worked as a design partner for Hansgrohe since 1987, and with AXOR for over 30 years.



AXOR MyEdition



AXOR Uno



AXOR Montreux

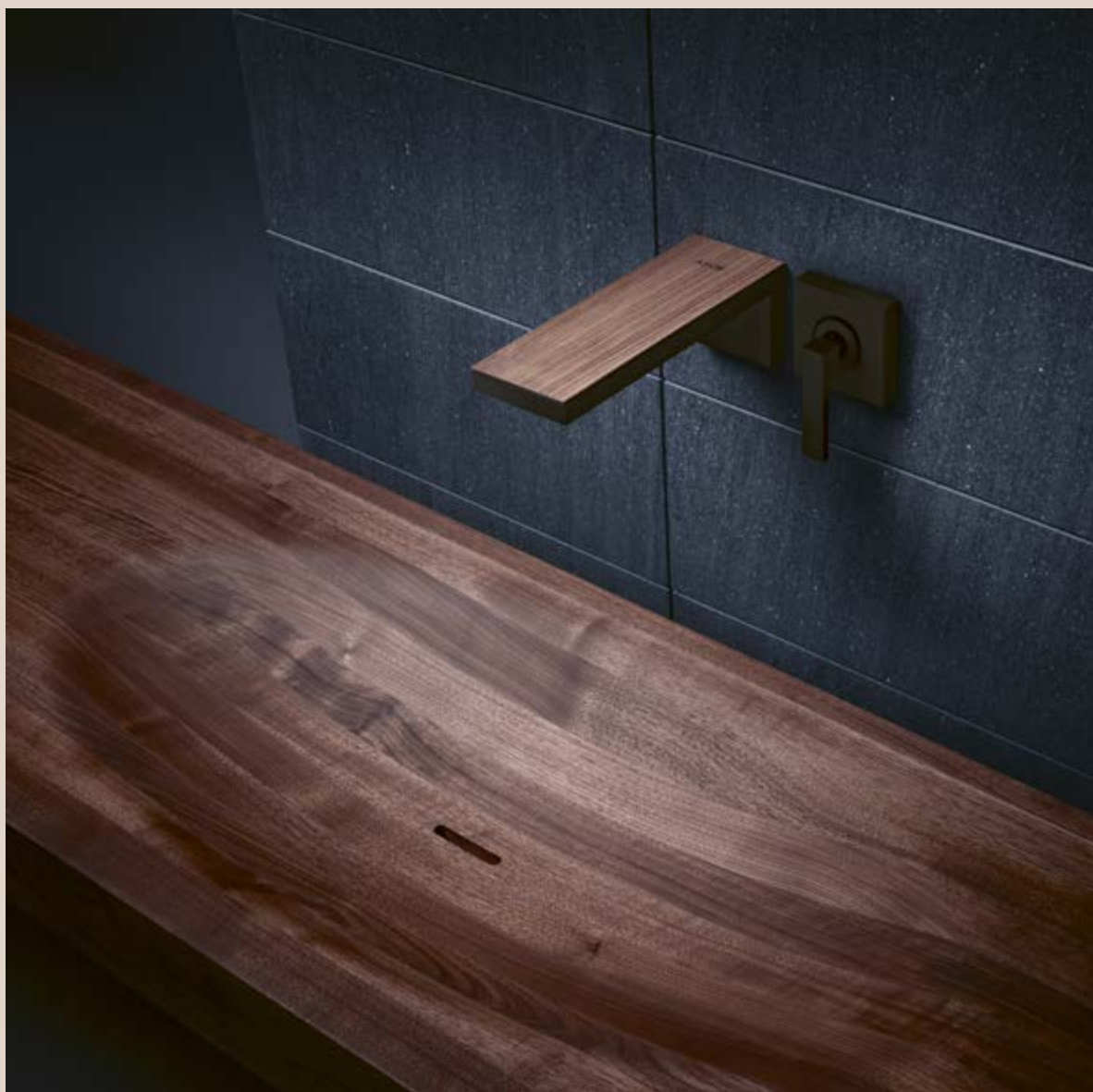


The ultimate in personalization

AXOR MyEdition

“Making a personal statement through customized interiors is the essence of luxury. With AXOR MyEdition, we’ve created a blank canvas, setting the stage for personal creativity. The collection is a creative kit for escape and imagination.”

ANDREAS DIEFENBACH, PHOENIX



At the wash basin, AXOR MyEdition is available as a single-lever mixer in three different heights, as a wall-mounted mixer and as a classic three-hole mixer.

The AXOR MyEdition faucet body is crowned by a replaceable, rectangular cover plate, available in a choice of one of eight luxurious and sophisticated materials. Developed with painstaking care, crafted with masterly precision and tested under extreme conditions, each plate is unique. For those seeking the ultimate in personalization, AXOR also offers a special, easily-exchangeable cover plate for customers to adorn with their own, personally chosen designs. In this way, a personal statement becomes a meaningful narrative, symbolizing a certain element, a special mood, a remembered landscape, a lasting image. The ideas materialized in the faucet's cover plate and surface finish reflect the texture of one's own identity.



With its rectilinear design and generous flat surfaces, AXOR MyEdition is your stage for self-expression. Select from a range of exclusive cover plates—in rich Nappa leather, warm black walnut veneer, cool white Lasa marble or radiant mirrored glass—or dream up your own custom plates. Either way, AXOR MyEdition makes an elegant, timeless statement of personal luxury in the bathroom.

Purity of form and function

AXOR Uno

Bathroom concept by Lagoon Design, Lusail (Qatar)

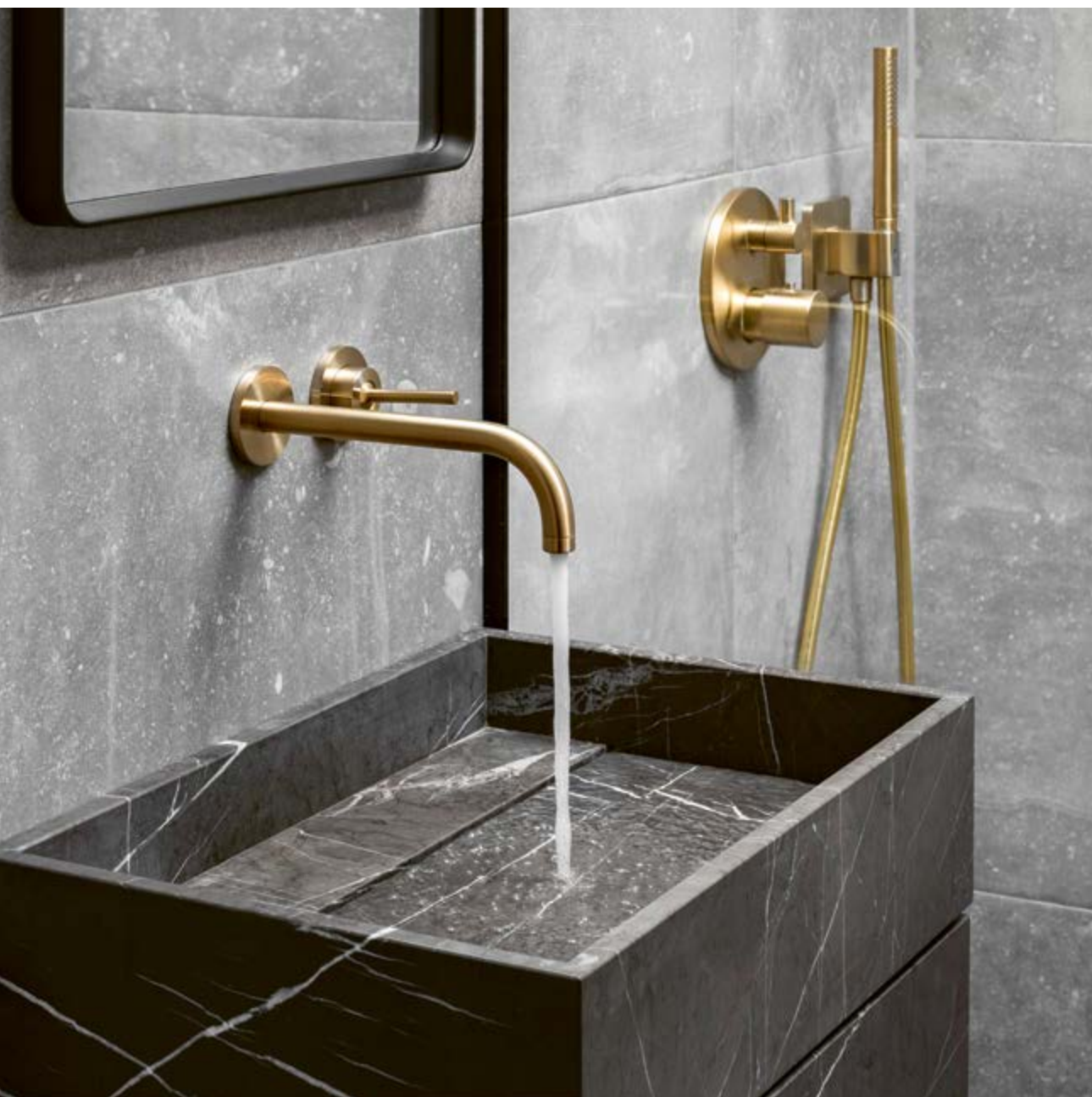
A host of AXOR fixtures finished in Brushed Red Gold Optic adds a layer of contemporary sophistication to the space.



“AXOR Uno is guided by logic, morality, and magic. For me, morality means the social and environmental responsibility we have as designers. Magic means creating products that people love. And logic is evident in the collection.”

TOM SCHÖNHERR, PHOENIX

AXOR Uno celebrates the simple shapes that come together in a purist-inspired archetypal design. The faucet consists of pipes—the original form of water transport—assembled at precise right angles. Based on the golden ratio, the proportions are balanced and aesthetically pleasing. Drawing on the power of simplicity, the form projects great strength.



The Audo, Copenhagen (Denmark) by Bjarne Hansen and Jonas Bjerre-Paulsen

The flat surfaces, soft corners and balanced proportions of AXOR Uno, finished in Brushed Brass, accentuate the "soft minimalism" defined throughout the Audo.



A perfect match with AXOR Uno: The AXOR Thermostatic module Select features a radically reduced aesthetic that encases state-of-the-art technology for effortless control of water volume and temperature—all at the touch of a button via Select technology.





Villa Roches Grises, Nantes (France) by Tiphaine Modin

Evoking the elegance of early 20th-century design, AXOR Montreux, shown in Brushed Bronze, brings an authentic, classic character to this contemporary bathroom designed by Tiphaine Modin.

“AXOR Montreux reinterprets the features of the early 20th century with great precision and workmanship, offering users the best in design and functionality.”

ANDREAS DIEFENBACH, PHOENIX

Belle époque meets state-of-the-art

AXOR Montreux



Villa Copenhagen, Copenhagen (Denmark) by Universal Design Studio

AXOR Montreux in Brushed Black Chrome harmonizes with this bathroom's hand-crafted zellige tiles and custom-made marble washbasin, subtly emphasizing the Villa Copenhagen's commitment to bringing heritage into the present.

AXOR Montreux draws inspiration from the first industrially produced mixers, which became a fixture of the grand hotels of Europe at the turn of the last century. With its slip-fit pipes and porcelain inlays, the collection is as authentic in its detail as it is contemporary in its manufacture. Ideal for traditional bathrooms, it can also provide a sophisticated contrast in modern, minimalist spaces.

Fisherman's House, Normandy (France) by Tristan Auer

Standing in front of the fireplace and a ceiling-high mirror, the floor-standing AXOR Montreux bathtub faucet evokes the charm of the luxurious Belle Époque bathrooms of the grand hotels of Europe.



A choice of high-spout mixers, three-hole mixers and lever handles offer a modern interpretation of the AXOR Montreux style.




AXOR Programs



AXOR Showers

Designed by

Antonio Citterio
Philippe Starck
PHOENIX
Nendo
Front
Barber Osgerby

A close-up photograph of the AXOR ShowerSphere showerhead. The showerhead is a large, oval-shaped, monolithic design with a brushed metal finish. It is mounted on a wall via a minimalist, square escutcheon and a shower arm. The showerhead is shown in operation, with a fine, low-volume spray of water falling from its surface. The background is plain white.

The unique design of AXOR ShowerSphere is characterized by a monolithic, ovaloid shower cover with slanted edges, supported by a minimalist softsquare escutcheon and shower arm.

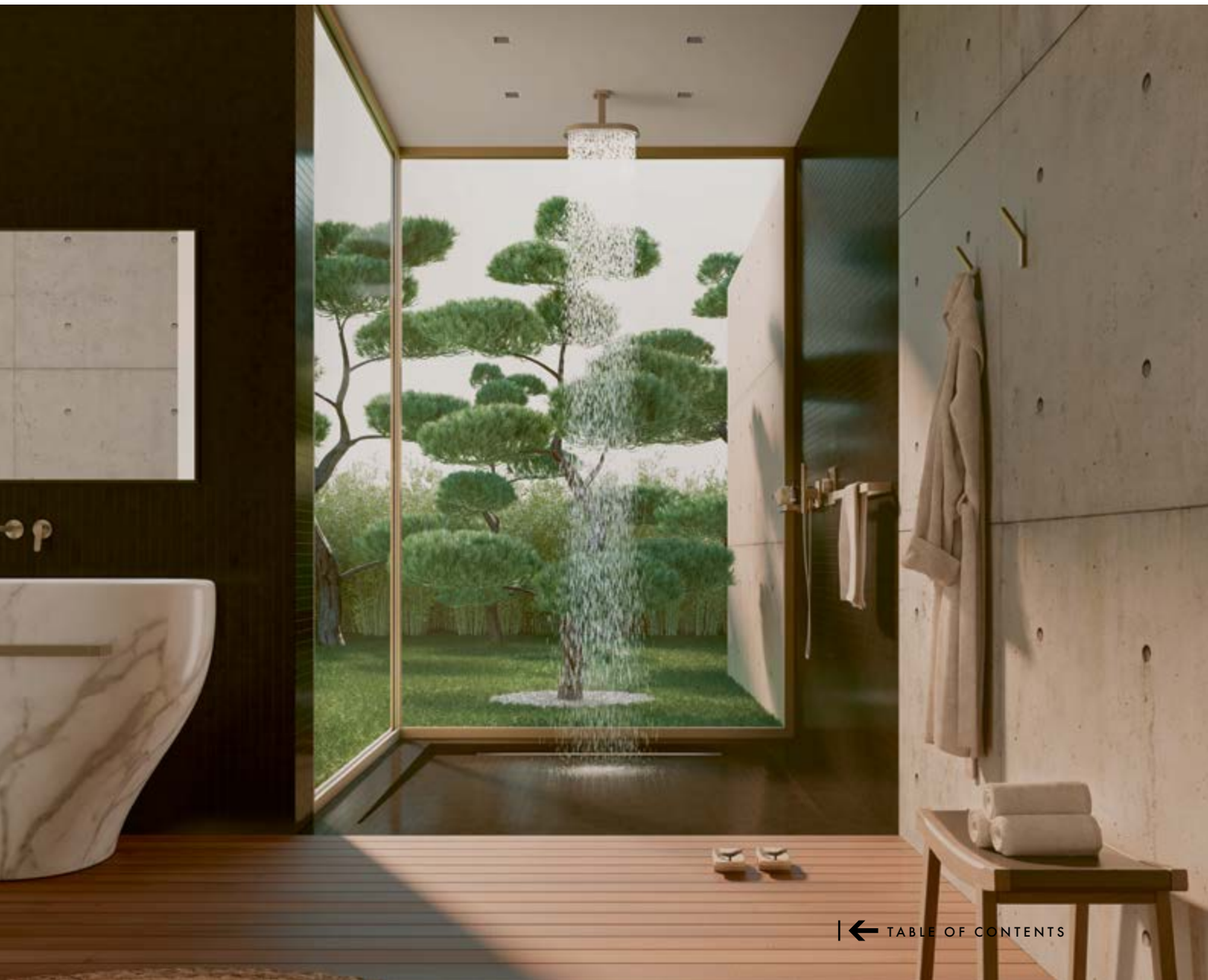
Antonio Citterio's latest shower program, AXOR ShowerSphere, impresses with its unique elliptical design; its generous low-volume spray; and the wide variety of luxurious shower experiences it provides.

Comprehensive in its offering, extraordinary yet universal in design, AXOR ShowerSphere excels in virtually any bathroom environment while harmonizing exquisitely with products across the AXOR portfolio and Citterio's other collections in particular.

More comfort. Less water.
A new shape but the same
timeless, characteristic
elegance.

AXOR ShowerSphere

The unique design of AXOR ShowerSphere makes for exciting combinations with different AXOR collections.





A source of light and water

AXOR LampShower

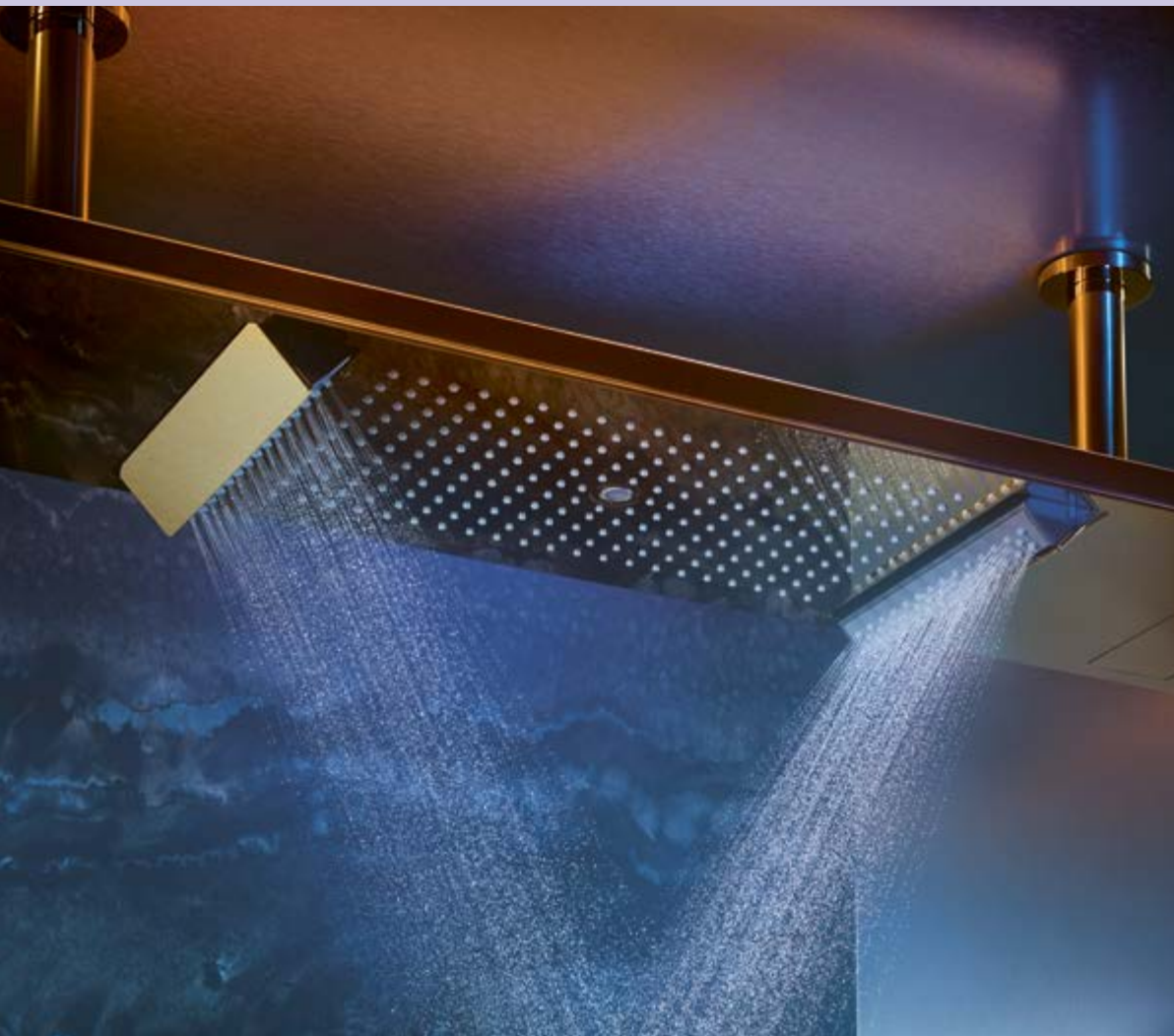
The AXOR LampShower created by Nendo integrates lighting with the shower to form an exclusive design object. A transparent body and O-shape shower cover wrap around a visible lamp characterize the design of AXOR LampShower. A delightful interplay of the senses results: The lamp blurs the lines that normally define a space to ring a sense of coziness to the shower, while a wide wreath of rain completely surrounds the body with water.



Luxury from above

AXOR ShowerHeaven

AXOR ShowerHeaven 1200/300 4jet is a new archetype in the shower, offering a grand stage for water. Here, it is staged in an extraordinary way: with a revitalizing water jet, a soothing rain shower, all the way up to the gentle PowderRain—the AXOR innovation in water design that envelops the body like a cocoon of water with velvety-soft water droplets.







Make the most of your rituals

AXOR Conscious Showers

Taking a shower is one of the most precious moments of the day. AXOR has developed the AXOR Conscious Showers to make this ritual both pleasurable and responsible. The showers meet specific requirements for more sustainable water use while setting the highest aesthetic standard. Whether circular or rectangular, the showers are available in a full range of brilliant, durable AXOR FinishPlus surfaces, including lacquered Matt Black, and can be combined with any AXOR bathroom collection. All three AXOR Conscious Showers offer a uniquely satisfying combination of a large showerhead with a powerful spray that covers the body and a low flow rate from 6 l/min. AXOR Conscious Showers personally express one's conscious approach to the precious things in life.





AXOR

Shower Systems

Designed by

Antonio Citterio
Philippe Starck
PHOENIX
Nendo
Front
Barber Osgerby



Recessed into the wall, AXOR Incava takes the form of a soft square escutcheon that protrudes a mere 11 millimeters.



Its smooth, flat front presents the user with an integrated thermostatic module, a hidden hand shower, and an expansive storage niche, ten centimeters deep.

Seamless. Subtle. Serene.

AXOR Incava

AXOR Novelty

AXOR Incava designed by Antonio Citterio ushers in a new era for the bathroom, elevating the shower area into a space of serenity and ritual. Combining three distinct functions—thermostatic control, hand shower, and storage niche—this innovative architectural object discreetly disappears into the wall, bringing full focus to the shower experience. Designed for seamless integration, visual clarity and effortless ease, AXOR Incava is highly customizable and universally compatible with AXOR collections and programs.







A luxurious shower experience for indoors

AXOR Starck Shower Column

Radically minimalist in design, the AXOR Starck shower column focuses the attention on water itself. Exposed or concealed, the thermostatic mixer provides precise regulation of water temperature and flow volume. And from above, the generously sized showerplate uses RainAir technology to cocoon the user in superfine droplets. Available with PowderRain spray type as standard, AXOR Starck also offers a dual spray hand shower with both immersive Rain and concentrated MonoRain spray types.



Uncompromisingly streamlined, the shapes come together to form a unique whole: a circle. A cylinder. A rod. The result is a one-of-a-kind shower column.





The AXOR Starck Nature Shower Column can be installed on a variety of individually selected materials, from glass to stone and metal to wood.

Outdoor shower comfort for true individualists

AXOR Starck Nature Shower Column

The demand for 'outdoor living' continues to grow as more people recognize the importance of nature in modern life and seek new connections with it. Lifestyles are increasingly shifting outdoors—a trend that goes beyond the bathroom and calls for well-designed products for this new living space.

Developed in collaboration with Philippe Starck, the AXOR Starck Nature Shower Column meets the requirements for an aesthetic, durable and reliable product for outdoor use: minimalist and iconic in design, precise in operation and offering maximum showering comfort, the shower column celebrates the luxury of water and provides showering pleasure in the open air.



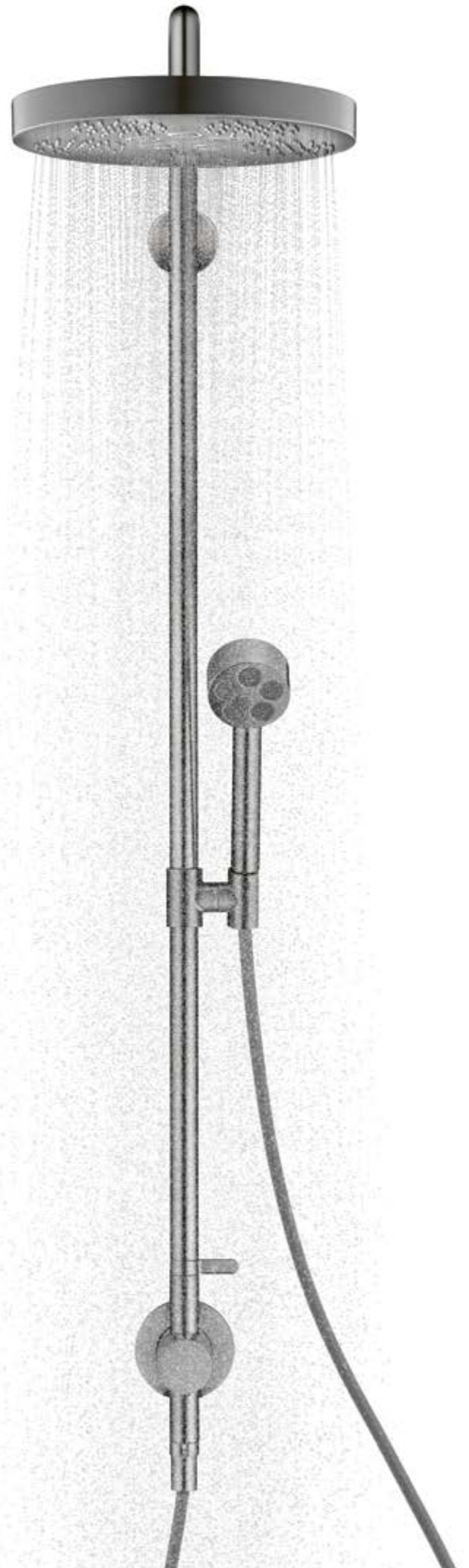
Reflecting uniqueness— making an architectural statement

AXOR ShowerComposition

A shower is a very intimate space, and it must be flexible and adaptable to an individual's needs. Designed by world-renowned creator Philippe Starck, AXOR ShowerComposition introduces a striking new universal design language, modern and timeless, to the shower area. The program features sleek, flat surfaces and ultra-slim profiles in an architectonic composition that presents novel possibilities for individual expression.

Whether as an all-in-one shower panel or a personalized arrangement of floating modules, AXOR ShowerComposition offers exceptional performance, including immersive PowderRain spray mode overhead and PowderRain shoulder showers with angle adjustment.





All-in-one shower solution

AXOR One Showerpipe

The radical minimalism and outstanding performance that define the faucets of AXOR One apply equally to its shower selection. The AXOR One showerpipe with thermostat and overhead shower 280 1jet for concealed installation combines an overhead shower, hand shower, wall bar and thermostat into a single product and offers a clean appearance thanks to the cohesive design elements. The overhead showers and hand showers of AXOR One feature sleek forms and an innovative organization of Rain and PowderRain spray types, reflected in the distinctive graphic language of the spray disc.



Perfect purism in shower design

AXOR Showerpipe 800

The AXOR Showerpipe 800 provides an integrated system solution, consisting of a thermostatic mixer, overhead shower and hand shower, all in the purist pipework design of the AXOR Uno collection. Select technology allows for easy operation of the Showerpipe with its integrated AXOR overhead shower 350 1jet and innovative PowderRain spray mode.



Modern functionality— authentic in design

AXOR Montreux Showerpipe

Authentic showering with the AXOR Montreux Showerpipe. Externally: Belle Époque. Internally: state of the art. With cutting-edge thermostat technology and clearly separate control units for its overhead and hand showers. Committed to technological advancement.



The AXOR Montreux showerpipe offers intuitive outlet operation with clearly separate control elements for overhead shower and hand shower.



Van der Valk Hotel, Beveren (Belgium)

Embedded in the soft, textured pattern of the beige tiles, AXOR Montreux Showerpipe becomes an eye-catcher—classic yet contemporary, understated yet unmistakably opulent.



A design object with industrial character

AXOR Showerpipe by Front

The AXOR Showerpipe by Front design expresses a contemporary reinterpretation of traditional workmanship and industrial design. This approach manifests in the slender body of AXOR ShowerPipe, encompassing an integrated thermostat, hand shower and conical overhead shower in a refined juxtaposition of shapes and angles. Or, as the designer simply puts it, “we wanted to highlight the hidden aesthetics of the technology in an elegant way and create a charming product out of tubes, valves and funnels”. Playful yet understated, AXOR Showerpipe brings an archetype of design into the present.



AXOR

Shower Controls

Designed by

Antonio Citterio
Jean-Marie Massaud
Philippe Starck
PHOENIX
Barber Osgerby

Innovative technology for the shower and bath

AXOR Shower Controls



An comprehensive range of specially-designed, complementary products enhances the AXOR Shower range, enabling the creation of holistic and deeply-customizable shower experiences. Perfectly calibrating hot and cold water, AXOR thermostatic mixers ensure ideal water temperature and volume in the bath and shower. Exposed, they offer elegant design and ease of installation. Concealed, they merge seamlessly with any bathroom décor. Both offer ecologically-conscious water consumption and luxurious customization options. Many AXOR thermostats enable the control of multiple spray outlets, providing an ideally personalized shower experience.



AXOR thermostatic modules for concealed installation create unforgettable moments in the shower. For the ultimate ease of use: Select technology reduces operation to the touch of a button with precise regulation for constant temperature control. With escutcheons made of high-grade metal and available in a variety of designs.



Pushing the boundaries of individualization

AXOR ShowerSelect ID

Developed in collaboration with PHOENIX, the concealed thermostatic mixer extends just 45 mm from the wall, a feat made possible by the new AXOR iBox universal 2. Within these sleek confines, a central temperature control dial offers satisfying haptic and auditory feedback while surrounding paddles utilize the latest Select technology, allowing for quick, easy switching among spray types and outlets AXOR ShowerSelect ID is characterized by ultra-precise control, universal design styles and unique customization options.



With its unique system of custom inlay options for the product's monolithic central dial, AXOR ShowerSelect ID presents the perfect canvas to express your personality. This includes black Nero Marquina marble, Marble Lasa Covelano Vena Oro, black walnut, mirrored glass and black glass.

AXOR SHOWER CONTROLS





AXOR Drain

The shower drain becomes a design object

AXOR Drain

AXOR Drain elevates the shower drain to an object of design that completes the look of any AXOR bathroom. Available in the same rich range of AXOR FinishPlus colors and surfaces as the AXOR collections and programs, AXOR Drain makes an individual statement grounded in excellent function.

The first drain in the AXOR program offers a sleek and seamless aesthetic, without visible silicone joints, harmonizing with various shower floor surfaces—from marble to porcelain, travertine to slate. Thanks to newly acquired innovative technology and outstanding AXOR quality, the drains are easy to install, require minimum cleaning and offer uncomplicated access to one's choice of Siphon or Dryphon draining mechanism.



AXOR



AXOR



AXOR



AXOR Accessories

Designed by

Antonio Citterio
Philippe Starck
PHOENIX
Barber Osgerby





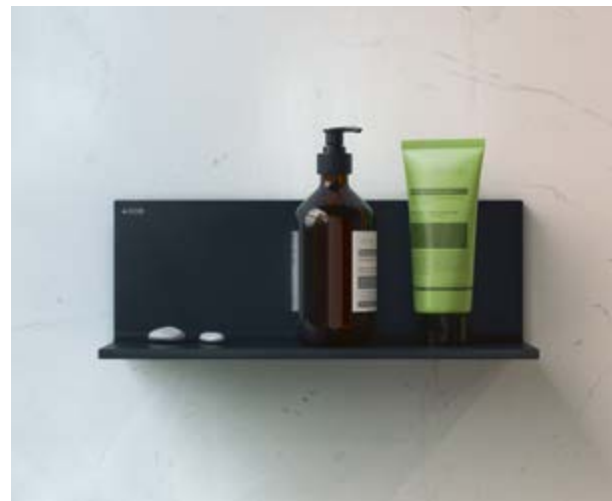
The AXOR Universal Circular towel ring by Barber Osgerby features corners rounded like quarter-circles, extending the program's circular theme to a rectangular form and ensuring compatibility with a wide range of AXOR bathroom products



A convenient shelf adds storage space without distracting from the design and finish of the selected AXOR shower products. The shower shelf features geometrically rounded corners, maintaining the circular theme of the AXOR Universal Circular Accessories.



The subtle, geometric design of the AXOR Universal rectangular towel hook understatedly complements all types of minimalist bathrooms.



The AXOR Universal Rectangular shelf provides maximum storage with a minimal footprint.

The AXOR Universal Softsquare towel hook impresses with its subtle, sensuous form.



AXOR Montreux offers an array of accessories inspired by the early industrial age



AXOR

Basins and Bathtub

Uniquely universal— matching your character

AXOR Suite basins and bathtub

Through elegant design and specially finished elements, AXOR Suite basins and bathtub, designed by world-renowned creator Philippe Starck, bring harmony and a personal touch to any bathroom interior. Each piece is made with SolidSurface material for resistance and longevity, while smooth contours, small radii and 'soft' inner basins, devoid of lines or ridges, ensure a clean modern look with universal appeal.



Rectangular or circular, the AXOR Suite basins are timeless, universal, elegant forms, characterized by small radii, soft and smooth inner basins.



Specially finished elements—an optional shelf on the bathtub (not shown), a wrap around surface on the wash basin sides—allow users to express their individuality.

The perfect finishing touch

AXOR FlushPlate

Functional, elegant and universal, the AXOR FlushPlate by Barber Osgerby completes the bathroom with quiet distinction. Through its refined parallel-push technology and robust construction, the design elevates operation to a haptic experience that is satisfying and effortless. Available in variants both for the hansgrohe iFrame and Geberit Sigma concealed flushing systems, AXOR FlushPlate ensures a simple flat-wall installation that fits perfectly with different interior styles. Available in all AXOR FinishPlus surfaces, the AXOR FlushPlate makes a sophisticated statement while complementing the assortment of every AXOR collection.



The AXOR FlushPlate features a monolithic softsquare design with two identical circular flush buttons at its center.



The AXOR Bidette Showers are distinguished by its essentialist design, ergonomic handle and feather-shaped spray trigger.

Reimagining the bidet

AXOR Bidette Showers

The AXOR Bidette Showers elevate the bidet hand shower to a design object of outstanding functionality and elegant appeal. Designed for effortless one-handed operation, the hand shower features a trigger control to easily adjust the flow rate and spray intensity. For added safety and efficiency, the water supply is automatically shut off as soon as the hand shower is placed back into the porter. The AXOR Bidette Showers are available in the vast range of AXOR FinishPlus surfaces to complement all AXOR collections and programs.

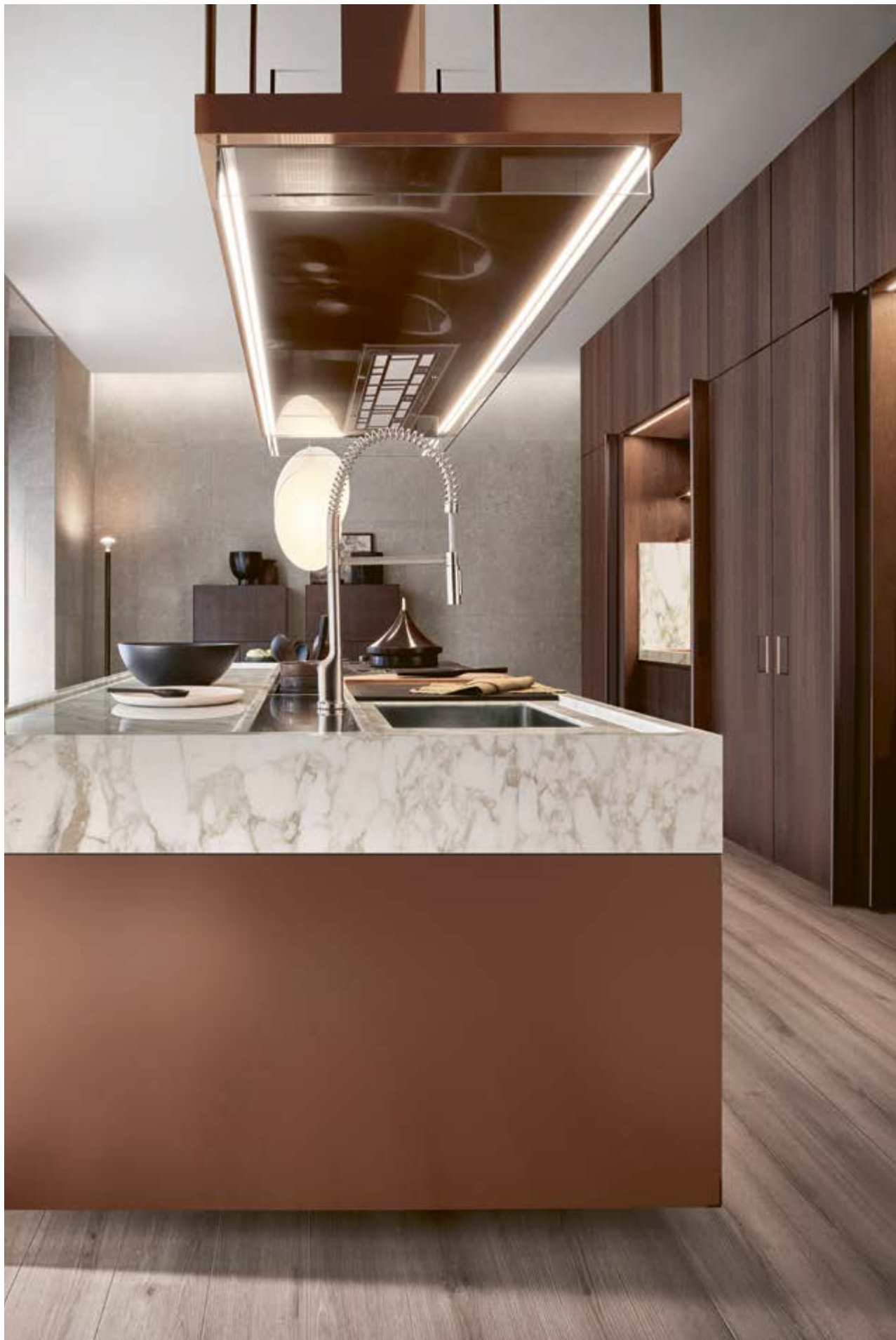


@Courtesy of Arclinea

AXOR Kitchen

Designed by

Antonio Citterio
Philippe Starck
PHOENIX

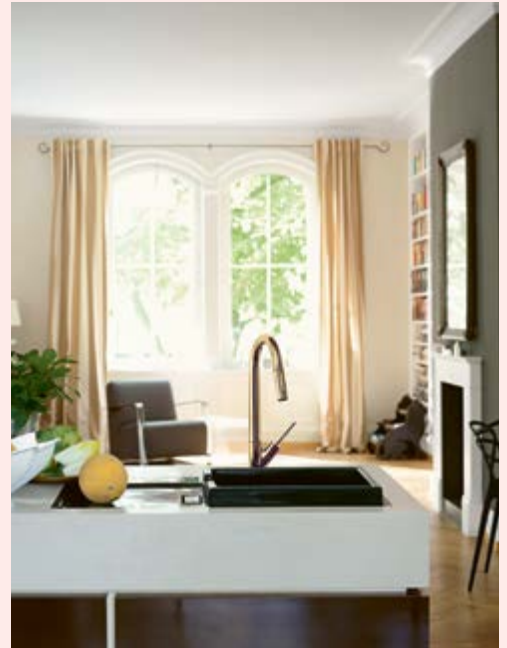


@Courtesy of Arclinea

The AXOR Citterio kitchen faucet combines astonishing beauty with exceptional ease of use.

The gastronomic ideal

AXOR Kitchen



A minimalist marvel. Inspired by the archetypal hand pump, the AXOR Starck kitchen faucet evokes our historical connection with water.



AXOR Citterio M is the definition of discreet, urban chic. Available in distinctive angular and parabolic variations, the faucet features a signature high spout that tapers flawlessly into an optional pull-out spray with dual settings, shower and direct.

AXOR Uno embodies the purist ethos of simplicity, balance and self-evident function. Easily configured for a range of spaces, from wide open to confined, the integrated telescopic spout can be conveniently extended and swiveled around, vastly increasing the radius of operation.



CONTACT

HEADQUARTERS

Hansgrohe SE/P.O. Box 1145/D-77757 Schiltach
Tel. +49 7836 51-0/Fax +49 7836 51-1300/info@axor-design.com/axor-design.com

AUSTRALIA

Hansgrohe Pty Ltd./Unit 4/71 Victoria Crescent, Abbotsford/VIC 3067/Australia
Tel. + 61 3 83 19 5753/info@axor-design.com.au/axor-design.com/au

BELGIUM

Hansgrohe N.V./Riverside Business Park/Boulevard Internationalelaan 55K/B-1070 Anderlecht
Tel. +32 2 5 430140/Fax +32 2 5 379486/info@axor-design.be/axor-design.com/be/nl

BRAZIL

Hansgrohe Brasil Metais Sanitarios Ltda./Rua Cristiano Viana, 401/10º andar cj 1001/05411-000 Cerqueira César, São Paulo
Tel. +55 11 3149-7070/Fax +55 11 3149-7099/info@axor-design.com/axor-design.com

CROATIA

Hansgrohe d.o.o./Oreškovićeva 6h/1/HR-10010 Zagreb/Croatia
Tel. +385 1 56 30 800/Fax +385 1 56 30 899/info@axor-design.hr/axor-design.com

DENMARK

Hansgrohe A/S/Jegstrupvej 6/DK-8361 Hasselager
Tel. +45 86 287400/axor-design.com/dk

UNITED ARAB EMIRATES

Hansgrohe SE DMCC Branch/Swiss Tower, Cluster Y/Jumeirah Lakes Towers, Office 1904/PO Box 34216
Tel. + 971 4 4 48 0 200/Fax + 971 4 4 48 0 299/sales.mea@axor-design.com/axor-design.com

ESTONIA

Hansgrohe Eesti/Mäealuse 2/EE-12618 Tallinn
Tel. +372 6826829/info@axor-design.com/axor-design.com

HUNGARY

Hansgrohe Kft./Forgách utca 11-13/1139 Budapest
Tel. +36 1 2 369090/info@axor-design.hu/axor-design.com

INDIA

Hansgrohe India Pvt. Ltd./7th Floor, Office No. 5/Fountainhead Tower 2/Viman Nagar/Pune, Maharashtra, 411014/India
Tel.+ 91 2066259500/info@axor-design.com/axor-design.com/in

JAPAN

Hansgrohe Japan K.K./Tennozu First Tower 2F/2-2-4 Higashi Shinagawa/Shinagawa-ku/Tokyo 140-0002/Japan
Tel. +81 3 5 715-3073/Fax +81 3 5 7153088/info@axor-design.jp/axor-design.com/jp

LATVIA

Hansgrohe Latvia/Raiņa str. 14/LV-3913 Iecava
Tel. +371 29 229029/info@axor-design.lv/axor-design.com

LITHUANIA

Hansgrohe atstovybė/Santoza/Ulonųg. 5/08240 Vilnius
Tel. +370 5 20 43291/info@axor-design.lt/axor-design.com

POLSKA

Hansgrohe SP. ZO. O./Ul. Koszykowa 65/PL-00-667 Warszawa
info@hansgrohe.pl/www.axor-design.pl

SINGAPORE

Hansgrohe Pte. Ltd./69 Mohamed Sultan Road/Singapore 239015
Tel. + 65 6884 5060/Fax + 65 6884 5070/info@axor-design.com.sg/axor-design.com

SOUTH AFRICA

Hansgrohe South Africa (Pty) Ltd./30 Archimedes Street/Kramerville Johannesburg/2090
Tel. 011 445 0000/sales@hansgrohe.co.za/www.axor-design.com/za

SWEDEN

Hansgrohe AB/21211 Malmö
Tel. +46 31 216 600/axor-design.com/se

UNITED KINGDOM

Hansgrohe Limited/Unit 2/Edgehill Drive/Tournament Fields/Warwick CV34 6XQ
Tel. +44 1372 472 001/Fax +44 1372 470 670/info@axor-design.co.uk/axor-design.com/uk

IMPRINT

PUBLISHER

AXOR/Hansgrohe SE

CONCEPT AND DESIGN

Tatiana van Houten, Germany

COPYWRITING

Alex Marashian, Germany

3D ARTIST

ACPV Architects, Milan
emotions4life Digital GmbH
Liganova
Martin et Karczinsky
recom GmbH
SupaCGI
Tara Bernerd & Partners

PHOTOGRAPHY

Arlinea
Bohmann+Sjöstrand
Marco Craig
Alexander Dwyer
Gianluca Di Iorio
Tom Hegen
Kuhnle & Knödler
Uli Maier
Geray Mena
Mierswa & Kluska
Lena Modigh
Kento Mori
PHOENIX
Michael Sinclair
Markus Wendler

PHOTOGRAPHY AXOR EXPERIENCES

The Conrad, Los Angeles (USA): Philip Vile
Private Residence, Augsburg (Germany): Tom Hegen
Park Lane Copenhagen, Hellerup (Denmark): Marianne Chloé
De Gulde Schoen Suite Hotel, Antwerp (Belgium): De Gulde Schoen Suite Hotel
Rosewood São Paulo (Brasil): Ruy Teixeira
Private Villa by Van Aarle's Bouwbedrijf, Netherlands: Jurrit van der Waal (for "The Art of Living")
BEYOND by Geisel, Munich (Germany): Marc Oeder
Il Sereno, Lake Como (Italy): Il Sereno Hotel
Bathroom Concept by Lagoon Design, Lusail (Qatar): Lagoon Design for Decoration Co.
The Audo, Copenhagen (Denmark): Tom Hegen
Villa Roche Grises (France): Elodie Dugué
Villa Copenhagen, Copenhagen (Denmark): Stine Christiansen
Fisherman's House, Normandy (France): Amaury Laparra
Van der Valk Hotel, Beveren (Belgium): Van der Valk Hotel

POSTPRODUCTION

eder GmbH
recom GmbH

PRINT

Druckerei Vogl GmbH & CoKG

PUBLICATION DATE

April 2026

All products are subject to availability. Availability may be temporarily affected by material shortages, supply chain interruptions, or other force majeure events. Please contact us for further details. Subject to technical changes and color deviations for printing reasons. Printed on 100% chlorine-free bleached paper.



AXOR / Hansgrohe SE
P. O. Box 1145
77757 Schiltach
Germany
info@axor-design.com

AXOR-DESIGN.COM

EN - AXOR WaterStories 2026
Form No 84121135 - 13.7/26/03



4 059625 842072